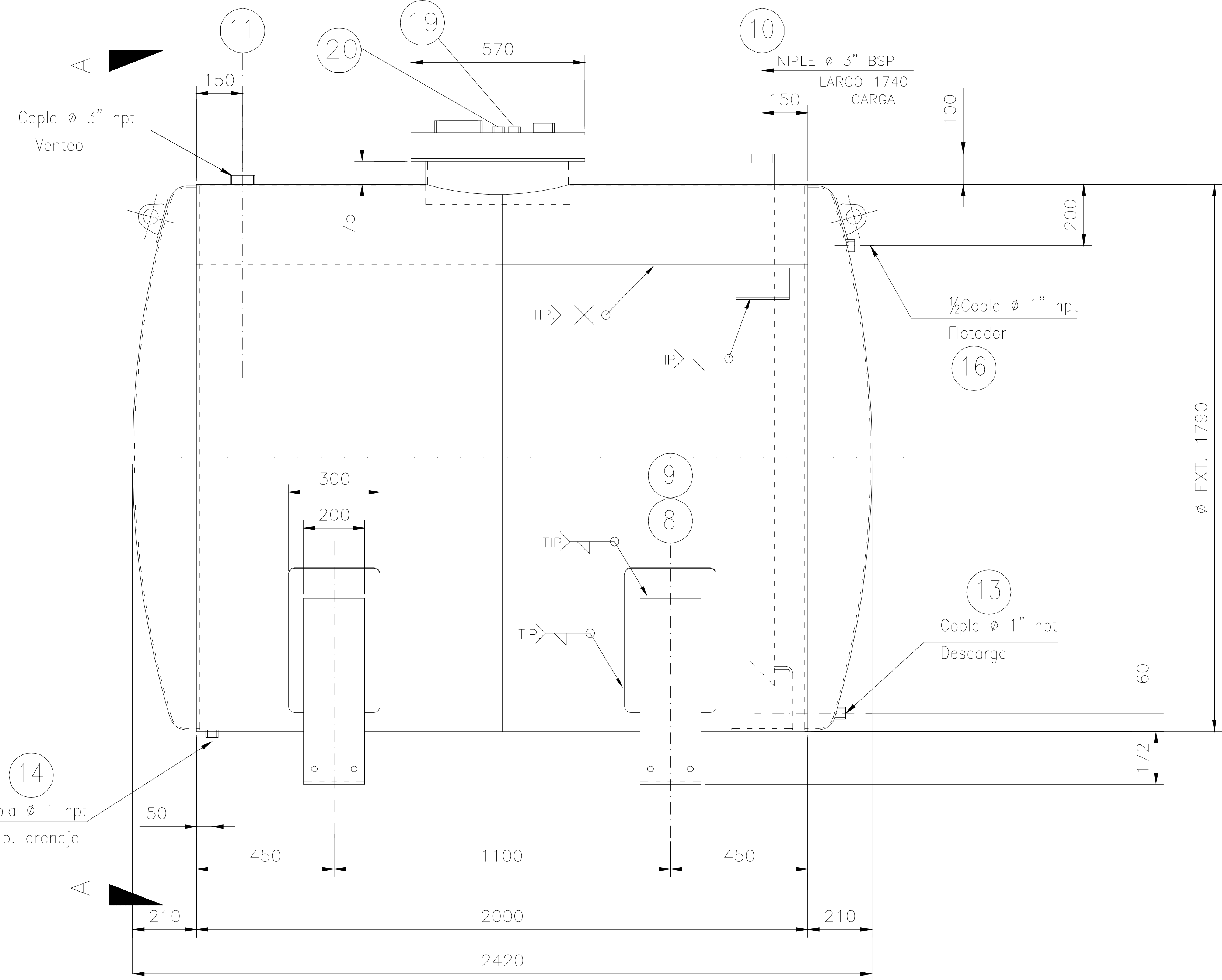
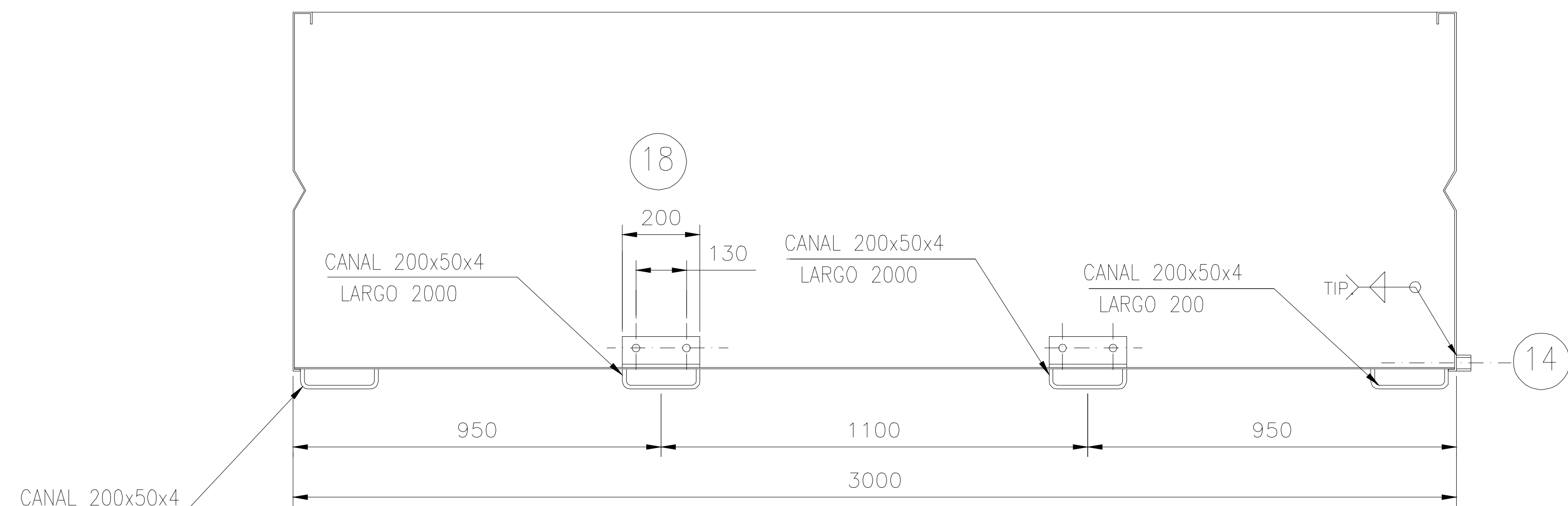


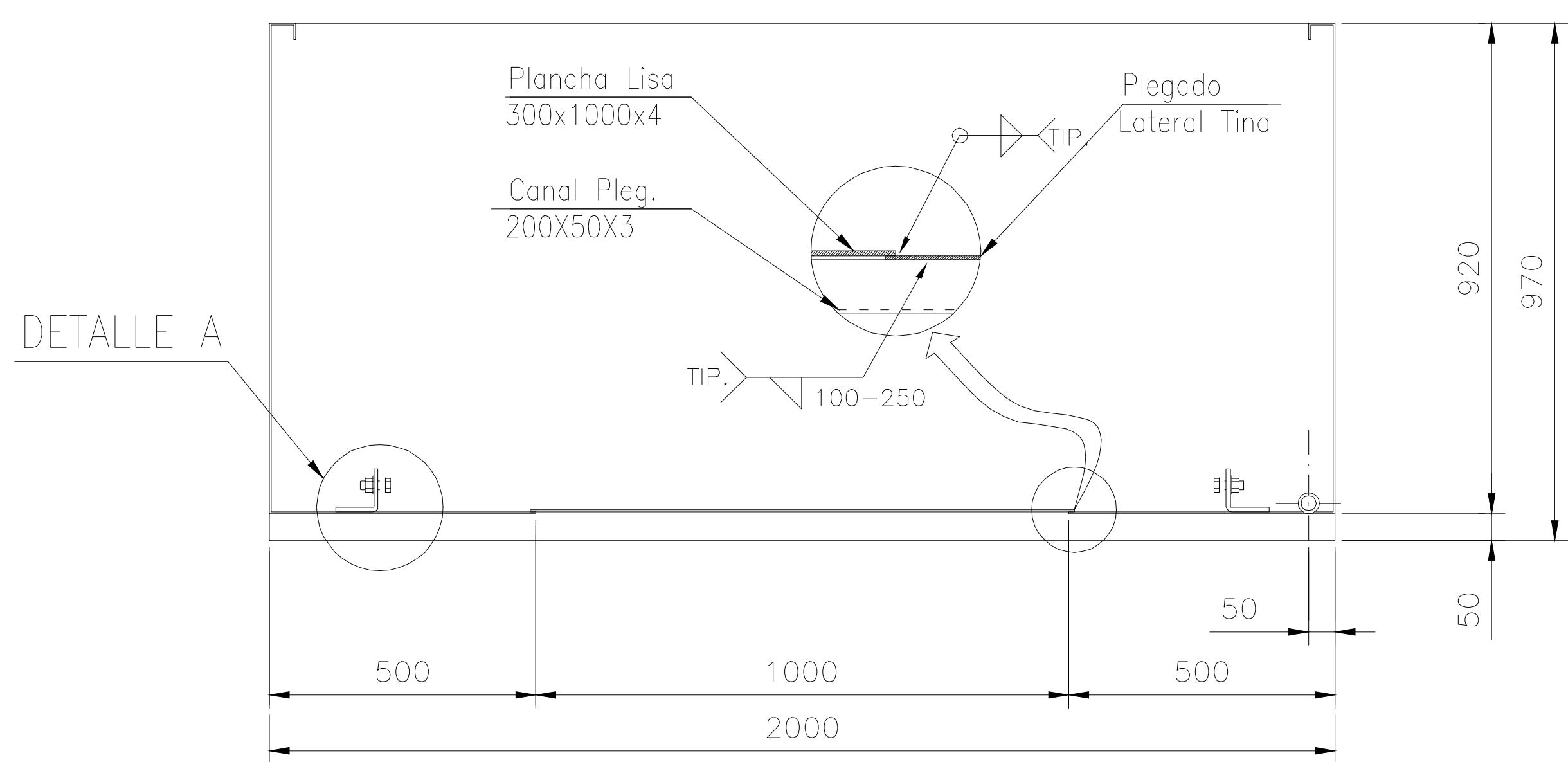
VISTA A-A



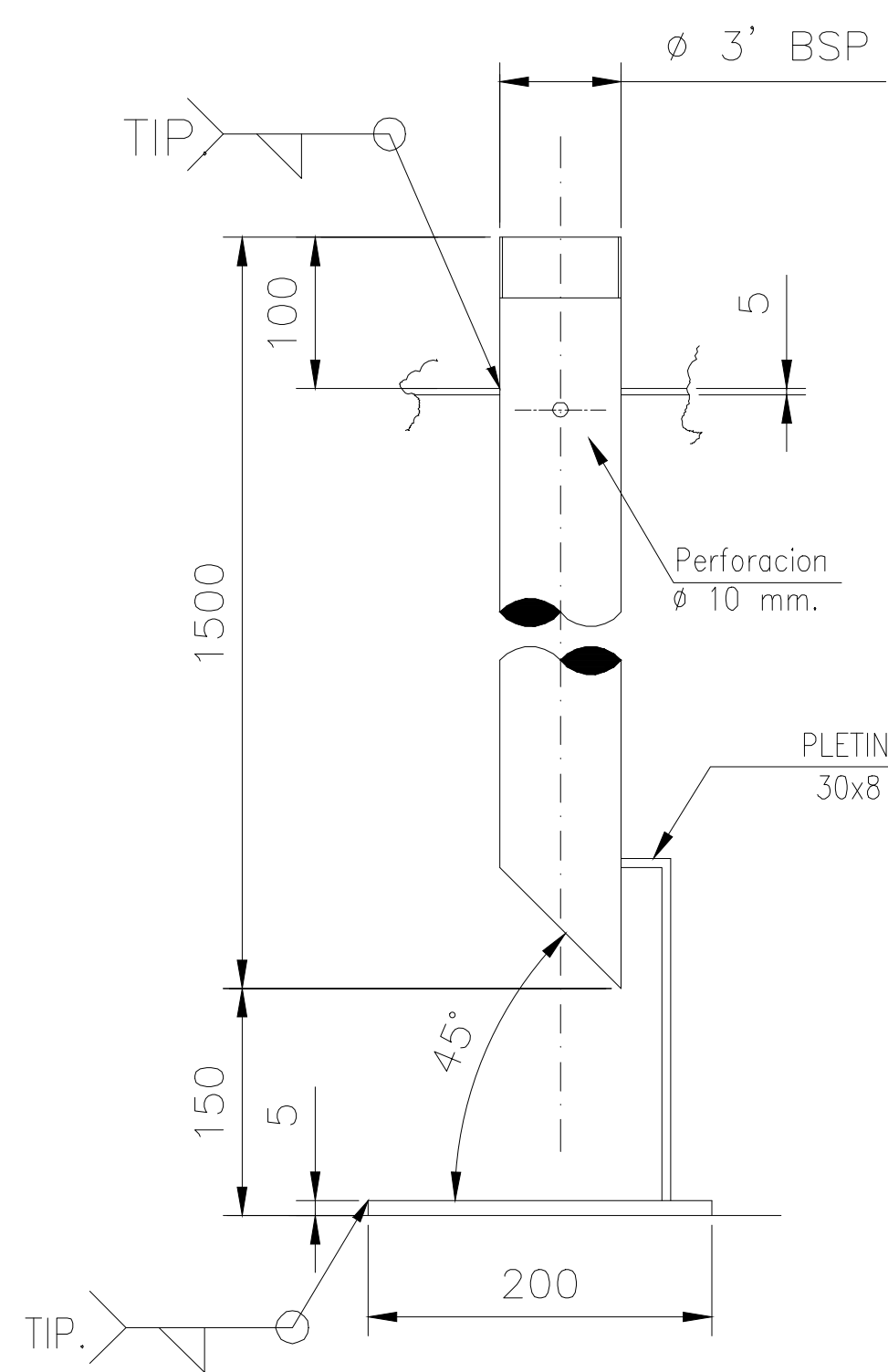
ELEVACION



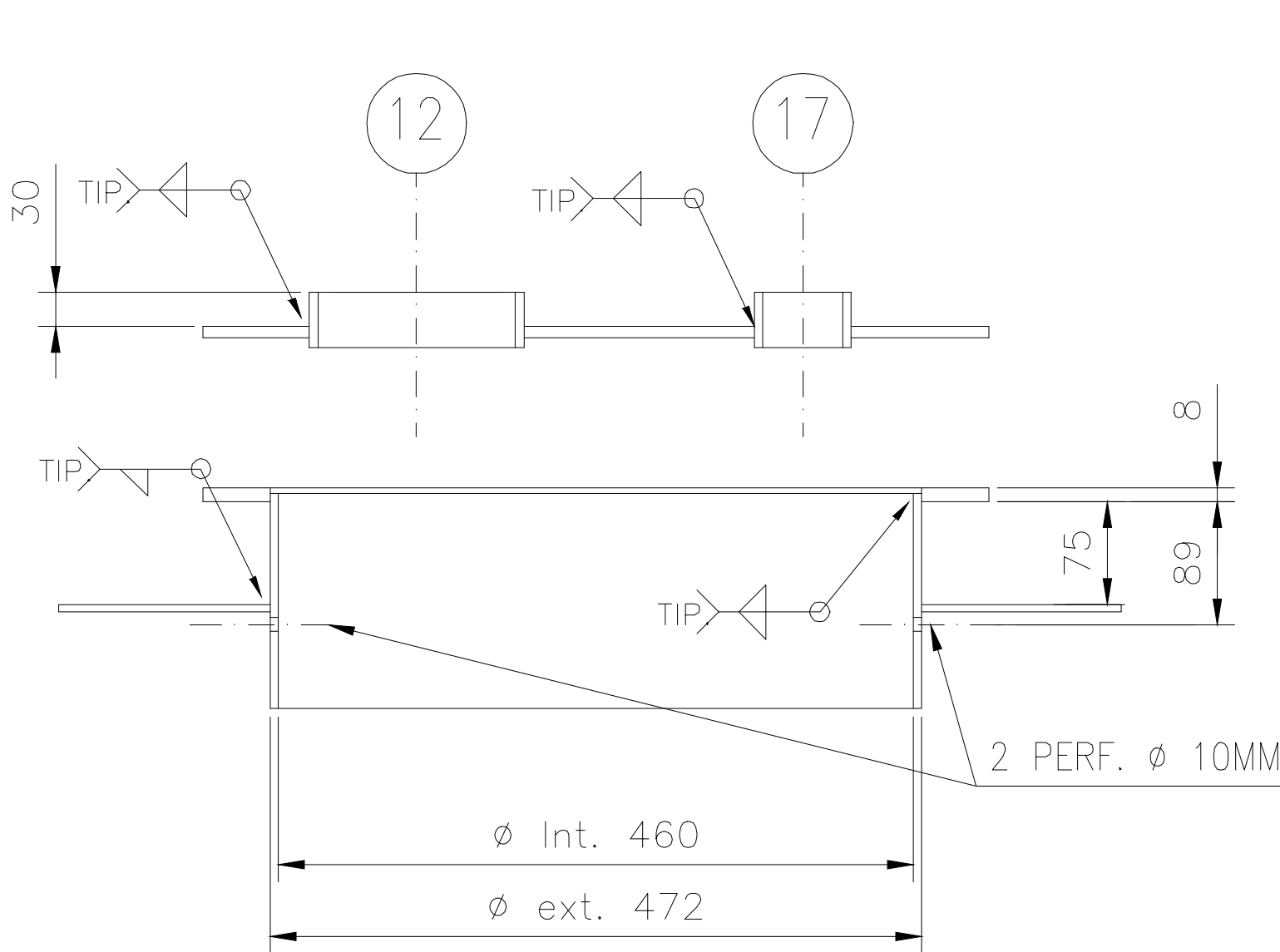
VISTA LATERAL TINA TK



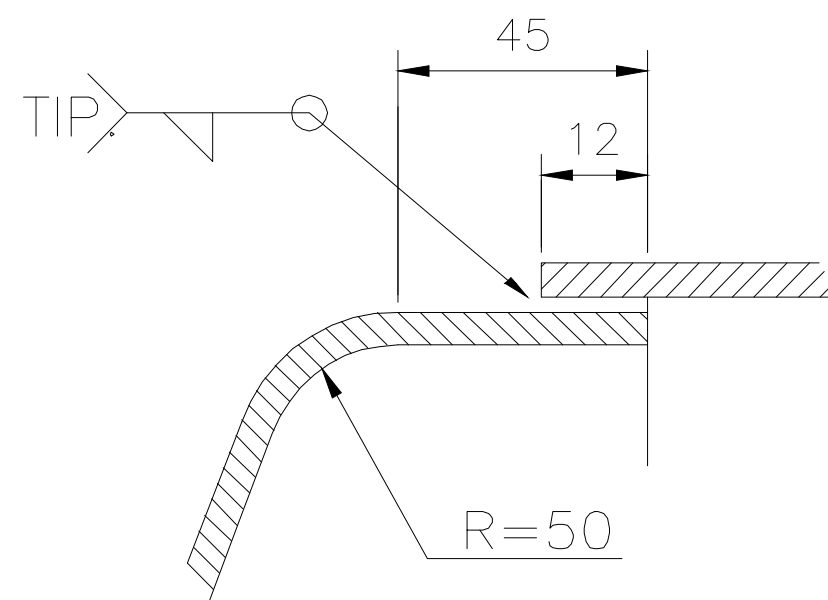
VISTA FRONTAL TINA TK



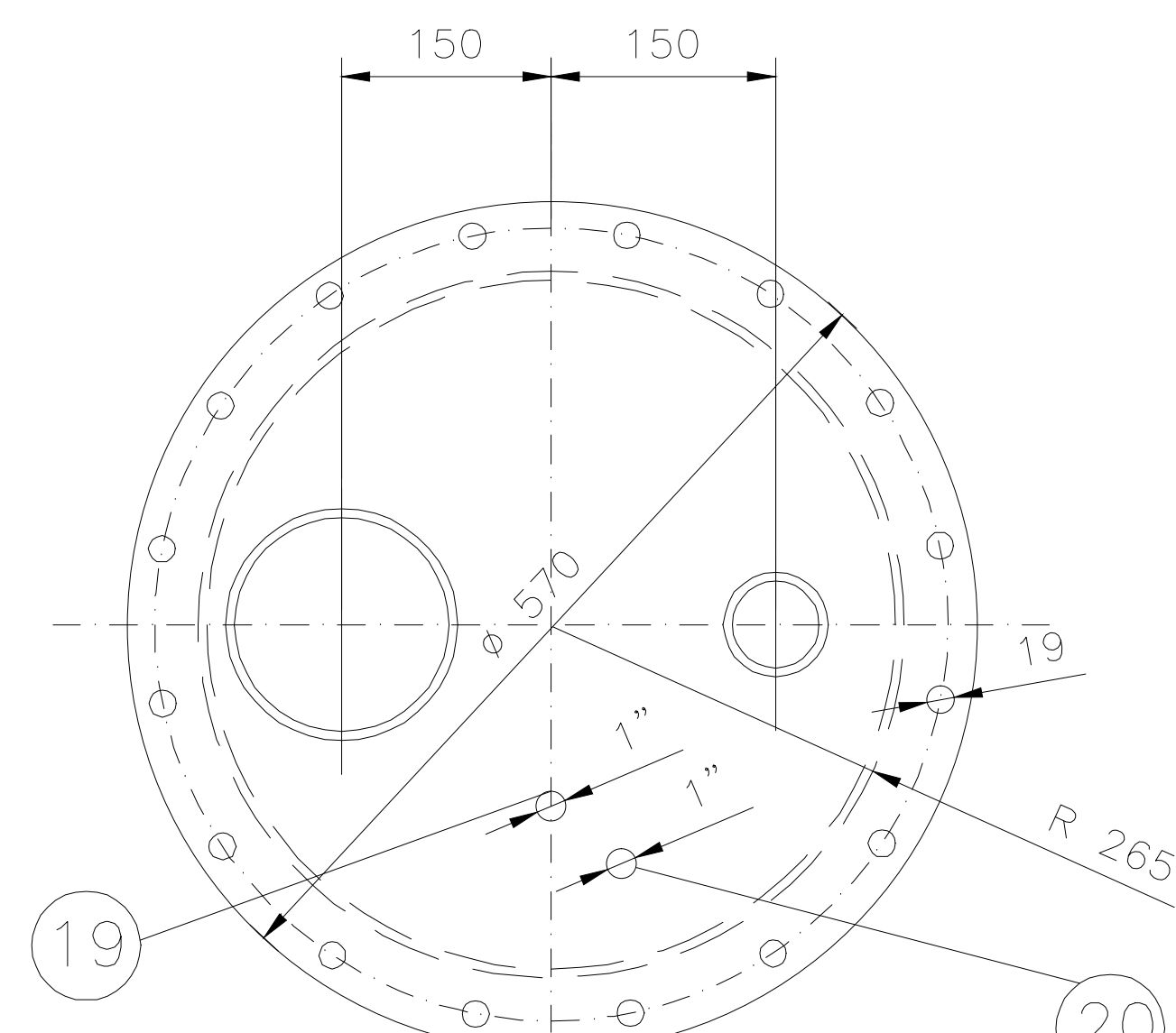
DETALLE CARGA N°10



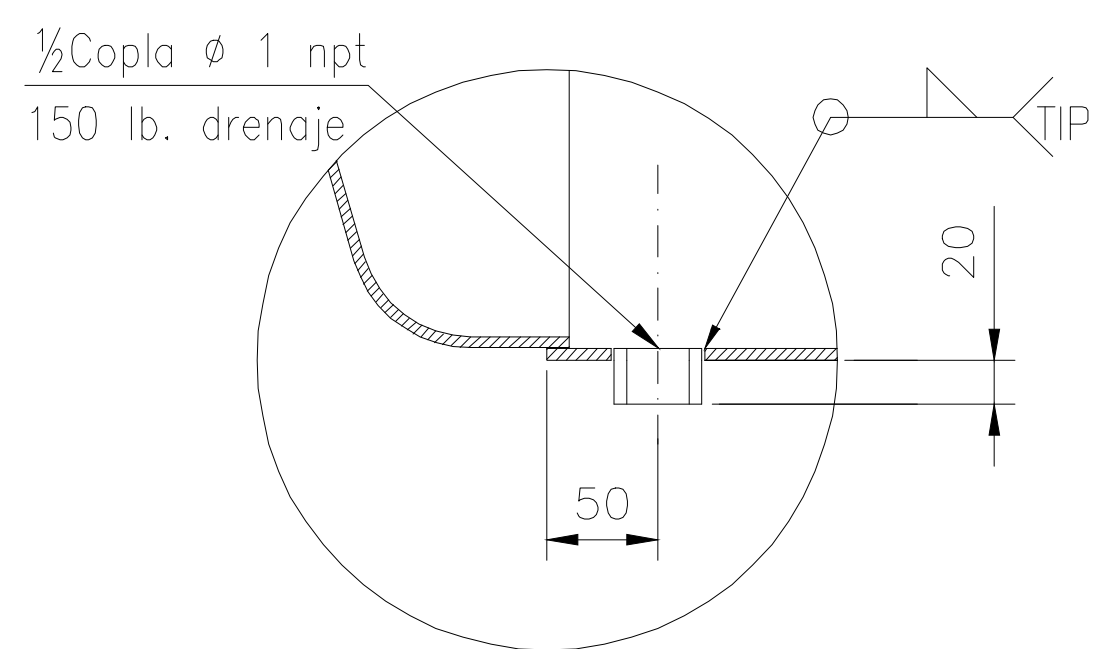
DETALLE UNION SOLDADA
MANHOL



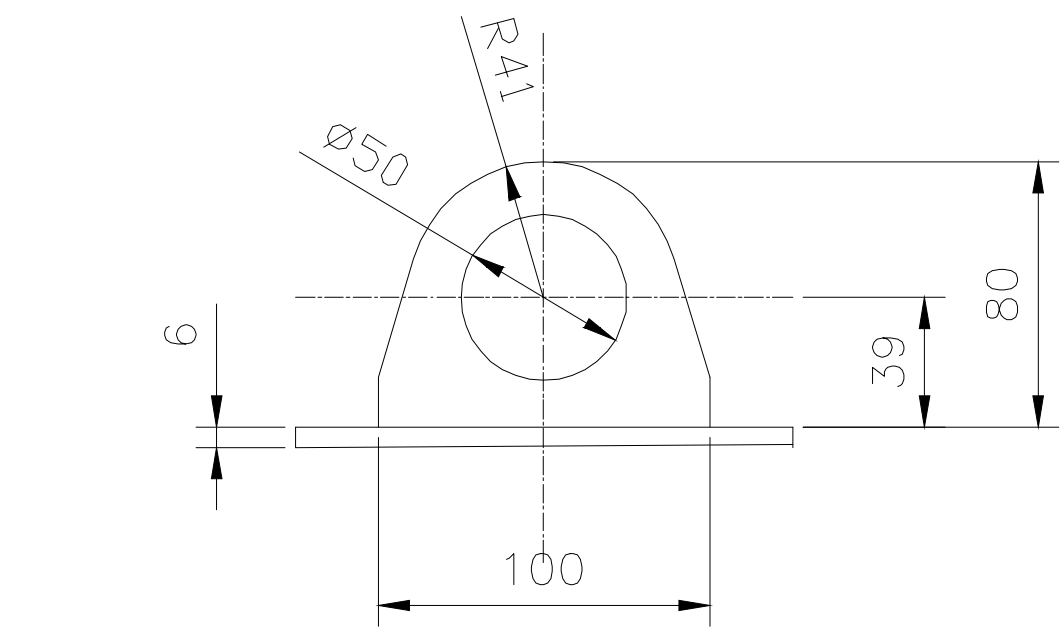
DETALLE UNION
MANTO/CABEZAL



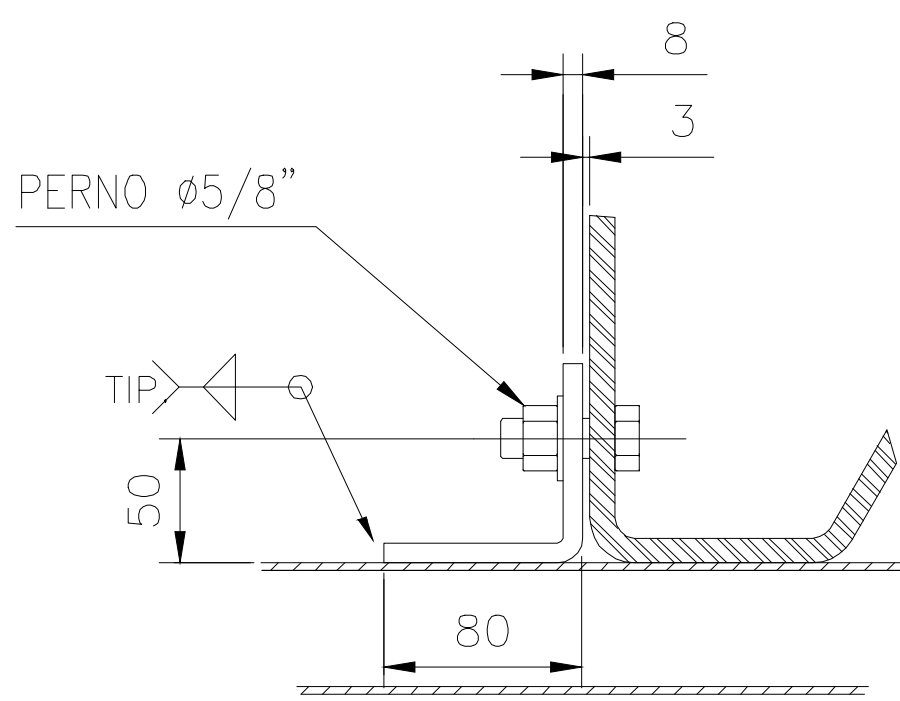
VISTA SUPERIOR
MANHOL



DETALLE PIEZA N°14
DRENAJE



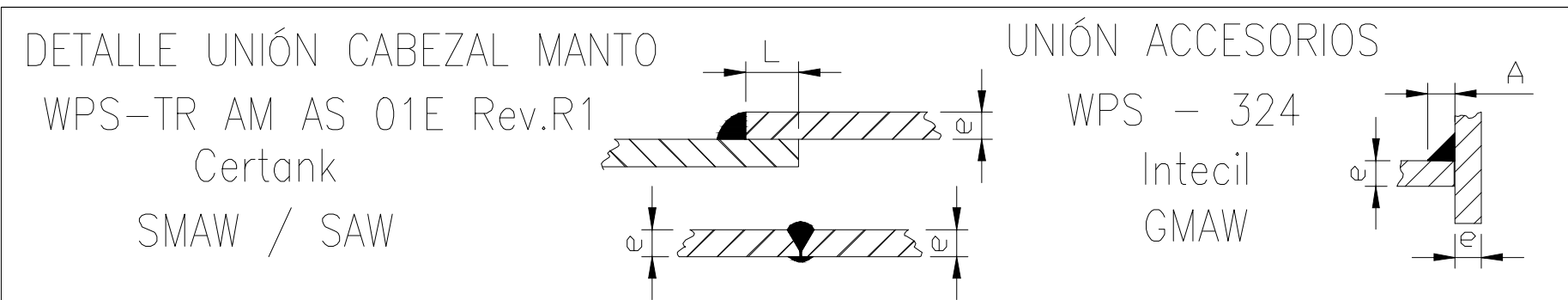
DETALLE OREJA IZAJE



DETALLE A
FIJACION TANQUE

20	RETORNO BOMBA	COPLA 1"HI	01	--
19	RETORNO MOTOR	COPLA 1"HI	01	--
18	ANGULO	ANGULO PLEGADO 100x100x8 L.200 MM.	04	2.5
17	COPLA ADICIONAL	COPLA ø2" NPT 150 LB. ASTM A-53	01	--
16	SENSOR	½ COPLA ø1" NPT 150 LB. ASTM A-53	01	--
15	NIVEL	COPLA ø½" NPT 150 LB. ASTM A-53	02	--
14	DRENAJE	½ COPLA ø1" NPT 150 LB. ASTM A-53	02	--
13	SALIDA	COPLA ø1" NPT 150 LB. ASTM A-53	01	--
12	VENTED EMERGENCIA	½ COPLA ø5" NPT 150 LB. ASTM A-53	01	--
11	VENTED NORMAL	½ COPLA ø3" NPT 150 LB. ASTM A-53	01	--
10	CARGA	CARERIA ISO ø3" x 1740 MM. ASTM A-53	01	20.3
9	PONCHO REF. PATA	PL. 700x300x6 A-36	04	10.1
8	PATA APOYO	PL. 1128x200x10 A-36	04	18
7	EMPAQUETADURA	ø 570 x 3 MM.	01	--
6	PERNOS ø 5/8"x1½"	UNC. ZINC. C/GOLLILLA PL. Y TUERCA HEX.	16	--
5	CUELLO MANHOLE	PL. 1463 x 150 x 6 MM ASTM A-36	01	11
4	MANHOLE	PL. ø 570 X 8 MM ASTM A-36	02	16.3
3	TINA ESTANQUE 5M3	ASTM A-36 ESP. 4MM.	01	665
2	MANTO ø1790 MM. EXT.	ASTM A-42 ESP. 5607x1000x5MM.	02	224
1	CABEZAL ø1779 MM. EXT.	ASTM A-36 ESP. ø1918x5MM.	02	118
N°	DESCRIPCION	MATERIAL	CANT.	PESO UN.

AS BUILT



PANAMERICANA SUR KM 24
San Bernardo - Santiago
Fono:(56-2) 3611924
Web:www.escochile.cl
email:info@escochile.cl

Proyecto/Project: TERMOGENERADOR CENTRAL MATAVERI
Cliente/Customer: MAESTRANZA DIESEL / SASIPA
Denominación/Description: ESTANQUE DE COMBUSTIBLE 5 m3
PLANTA - ELEVACIONES Y DETALLES

Plano/Drawing No.: MD-1158-ME-27
ESCALA/SCALE: 1/75
Revisión/Revision: 0
FORMATO ORIGINAL: Págs/Sheet: 001/001

01/WORK ORDER
1158

